

**DOOR & WINDOW FRAMES**  
**WATERPROOFING**  
**MACHINE BASE GROUT**  
**VOID FILLING**  
**PILING ENCASEMENTS**

## HAND OPERATED GROUTING PUMP

- » DURABLE
- » EFFICIENT
- » PORTABLE



### model HG-9

Output	15 cu ft/hr (112 gal)
Line Pressure	0 - 100 psi plus
Power Source	Manual
Material Hopper	5 gal (19L)
Outlet Diameter	1 in
Weight	53 lb (24 kg)
Dimensions	16" W x 24" L x 26" H

Maximum output and pressure cannot be reached simultaneously. Performance will vary depending on operator, cycle rate, mix design and placement line.



Hose and nozzle included

### model HG-5

Production Capacity	12 cu ft/hr (90 gal)
Line Pressure	0 - 100 psi plus
Power Source	Manual
Material Source	Bucket
Outlet Diameter	1 in
Weight	63 lb (29 kg)
Dimensions	7" W x 17" L x 28" H

Maximum output and pressure cannot be reached simultaneously. Performance will vary depending on operator, cycle rate, mix design and placement line.



Hose and nozzle included



Hose and nozzle optional



1 in x 10 ft Grout  
Hose 645185



Straight  
Pipe Nozzle  
645145

- » Low maintenance
- » User-friendly controls
- » Adjustable pressure
- » Variable volume
- » In-line discharge pressure gauge
- » Positive displacement piston pump
- » Quick disconnect hose adaptor

## RECOMMENDED

Campbell Hausfeld  
30-Gallon Truck-Mount  
Air Compressor  
Honda Engine  
25 cfm @ 175 psi



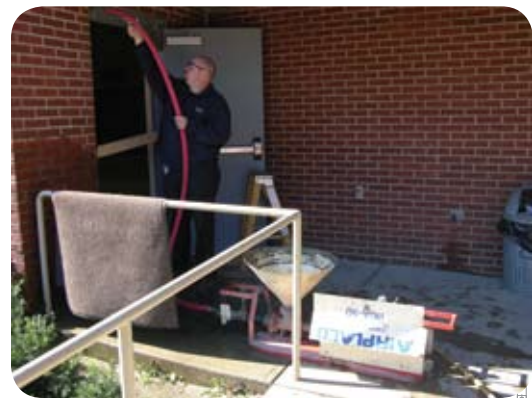
Adjustable  
Pressure

Heavy-Duty  
Air Cylinder

## model HGA-50

Max. Output	50 cu ft/hr (374 gal)
Line Pressure	0 - 250 psi (adjustable)
Power Source	Compressed air 15-20 cfm @ 110 psi for max. rate
Material Hopper	8 gal (30L)
Max Horizontal	60 - 75 ft
Max Vertical	20 - 25 ft
Outlet Diameter	1 1/4 in
Weight	115 lb (52 kg)
Dimensions	13" W x 55" L x 26" H

Maximum output and pressure cannot be reached simultaneously. Performance will vary depending on air compressor, air pressure, cycle rate, mix design and placement line.



## Northeast

4141 Airport Road  
Cincinnati, OH 45226  
Phone: 513.321.2950  
Fax: 513.321.8178  
Toll-Free: 1.888.349.2950

## Southeast

9202 Meadow Vista Blvd.  
Houston, TX 77064  
Phone: 281.469.7102  
Fax: 281.469.9524  
Toll Free: 1.866.469.7102

## West

1726 South Magnolia Ave.  
Monrovia, CA 91016  
Phone: 626.256.9310  
Fax: 626.359.7985  
Toll Free: 1.888.393.8635